



HURST
11

Swinger

A Hursto Presto Silhouette Painting

By Jim Hurst

Materials

12" X 16" Canvas

8.5" X 11" Swinger Traceable Print

Paint: Acrylic Black, White, Yellow, Red, Purple

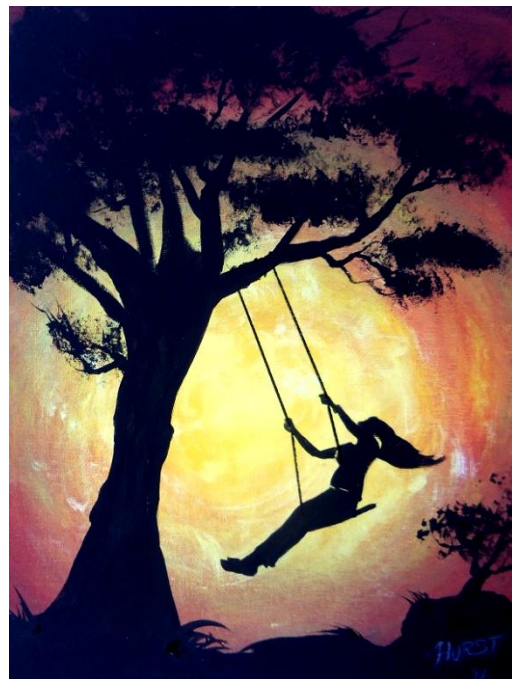
Brushes: 1.5" Gesso, #18 Flat, #6 Round, Script Liner, Sea Sponge

Easel or Paint Board/Flat Table

Palette or Paper Plate

Cup Water, Paper Towels/Rags

12" Ruler, Hair Dryer



Background

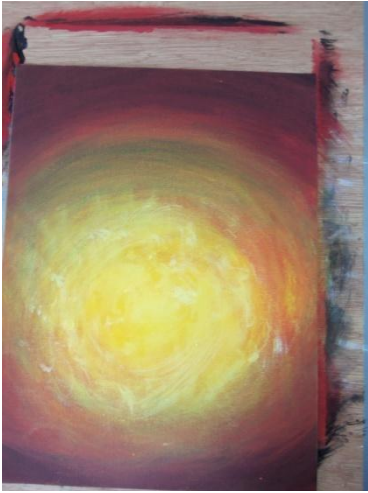
Using a 1.5" Gesso Brush, underpaint your canvas white in a circular pattern the center and darken to Black in a swirling vortex pattern from light to dark. Clean brush. Let canvas dry.

Possible color combinations

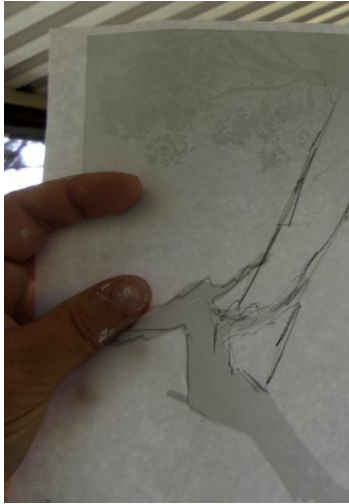
Yellow/Red/Purple White/Blue/Black Yellow/Green/Brown Blue/Purple/Black

Select 3 colors to represent your background from light to dark and with a 1" brush paint the lightest color first in the center using circular patterns. Then add other colors from light to dark using the same circular stroke.

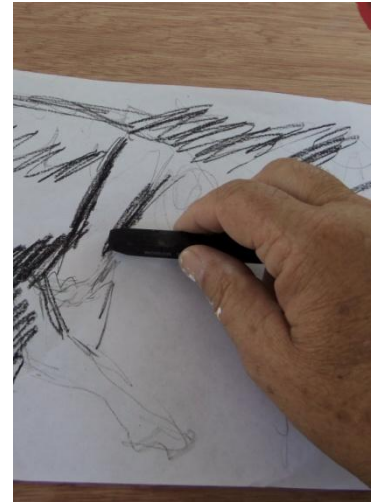




While still wet, add circular white cloudy-like textures. Blend it back with a dry brush. Let Dry.



Lift your Traceable and trace the back-side using a charcoal stick/pencil.



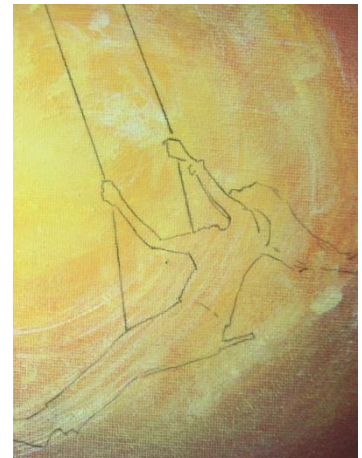
Lay the Traceable flat and rub charcoal along the lines to be transferred.



Rub the charcoal with a dry paper towel to clean excess.



Align your Traceable and trace the silhouette outline.



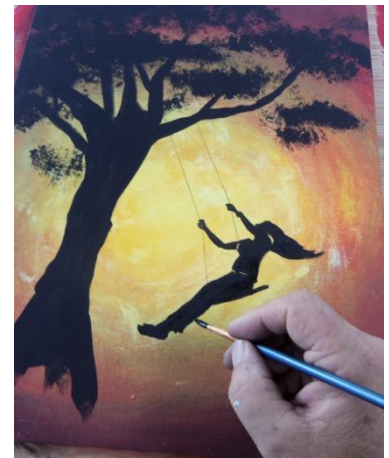
Use a ruler to trace the ropes.



Load a large Flat Brush with Black and paint in the tree trunk.



Roll a piece of sea sponge between your fingers and dab the tree foliage with black.



Using a small round brush and/or script liner loaded with black, paint in the swinger.

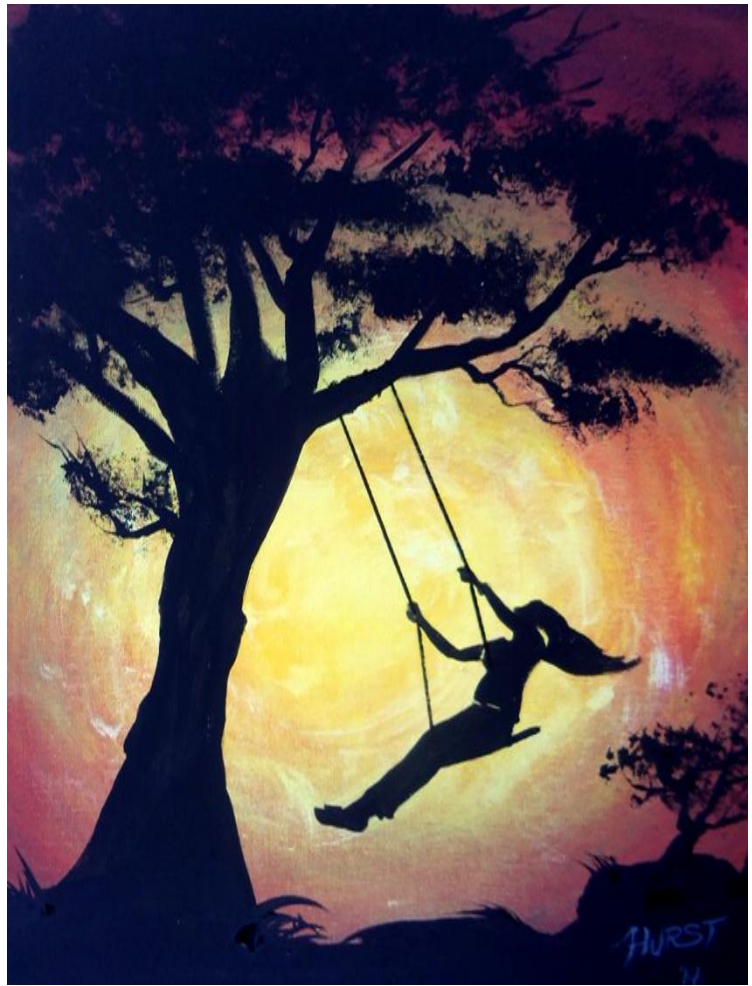


Use a ruler to lay in the ropes with a sharpie pen.

Load a large Flat Brush with Black and paint the ground.

Place twigs and skinny branches in the tree and grass/bushes with the script liner.

Sign your masterpiece with a script liner.



Hursto Presto Studios
hurstopresto.jimdo.com

Clean your brush often. Remember proper brush/tool care to extend its use. Thanks!



